

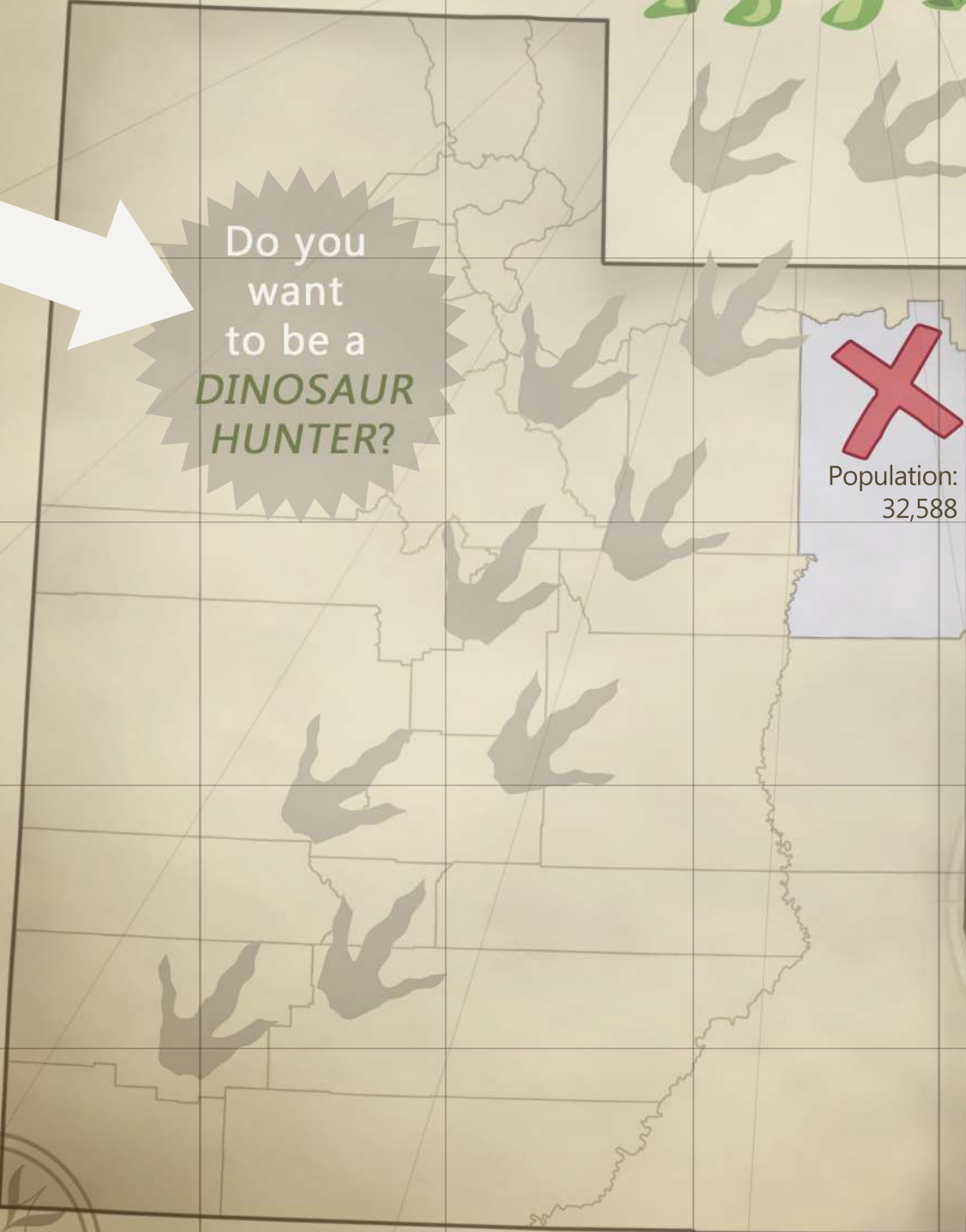
Discover beautiful

EXPLORE

DIVERSE breathtaking  
adventure



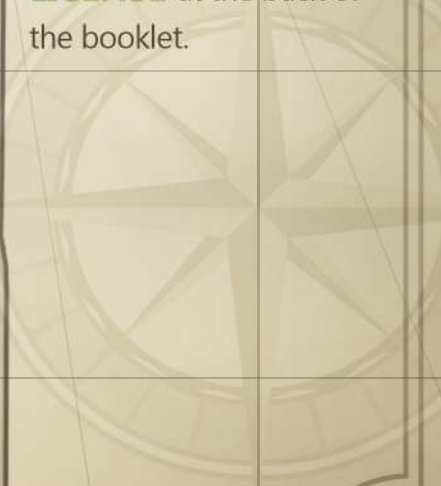
Do you  
want  
to be a  
**DINOSAUR  
HUNTER?**



**X**  
Population:  
32,588

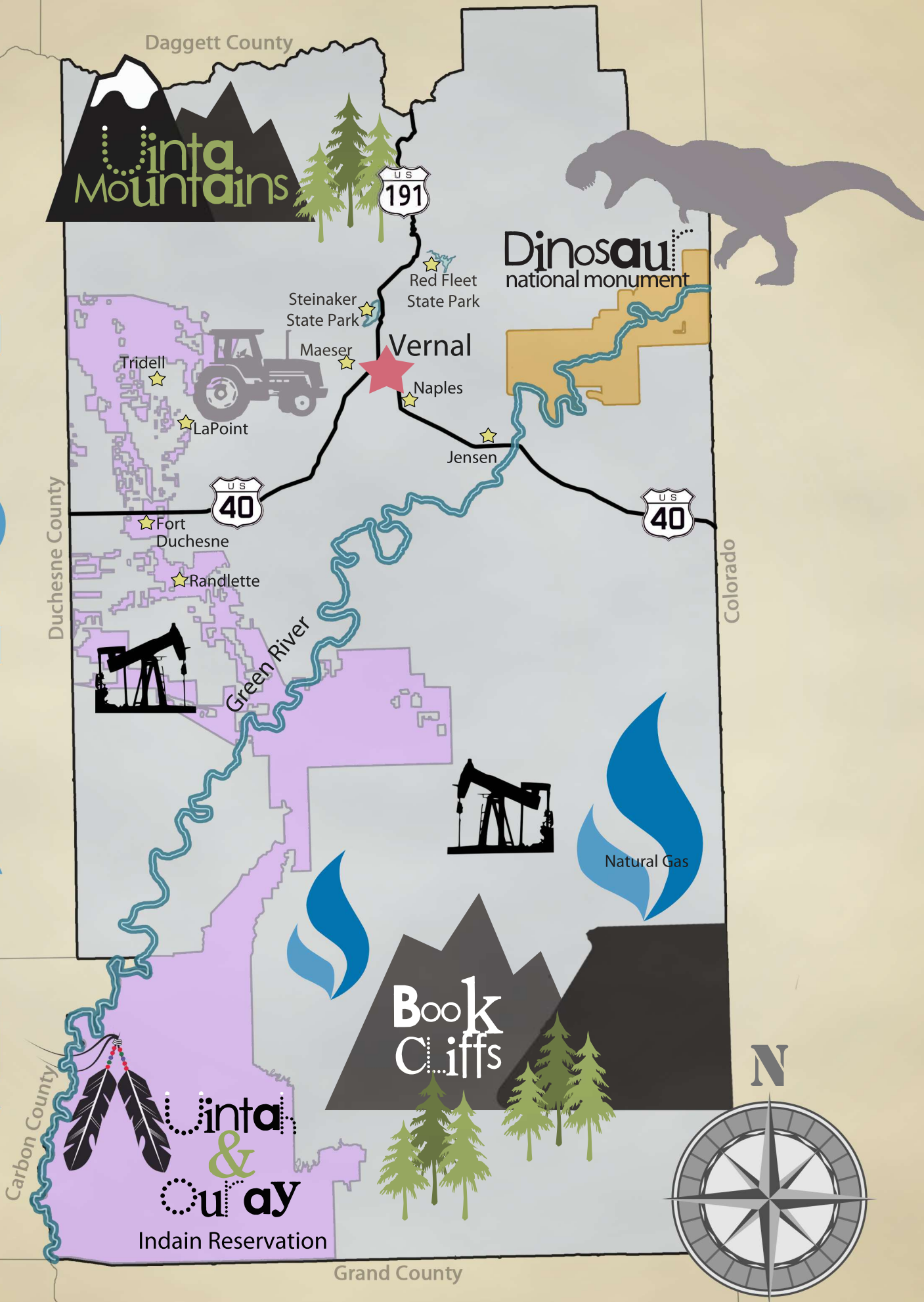
This adventure guide will help you learn why *Uintah County*, the heart of Dinosaurland, is a **GATEWAY** to *adventure* and *excitement*.

Complete the activities in this booklet to earn a **DINOSAUR HUNTING LICENSE** at the back of the booklet.



# GEOGRAPHY

UINTAH COUNTY



Uinta Mountains

Dinosaur national monument

Vernal

Book Cliffs

Uinta & Ouray

Indain Reservation

Green River

Natural Gas

N

# GEOGRAPHY

Each paragraph below has a title. Use the info in each paragraph to fill in the blanks of the title and use the titles to discover the secret message on the following page.

\_\_\_\_\_ y  
 10 12 17

*Uintah County* was named for the Ute Indian Tribe that lived in the basin. It has a total area of 4,501 square miles. *Uintah County* is centered in the Uinta Basin, which is a giant bowl formed by a prehistoric lake called Uinta Lake. The county's diverse geography ranges from high mountain terrain (Uinta Mountains) to the fertile Ashley Valley (site of the county seat), to a rugged canyonland which includes the Dinosaur National Monument, to desolate and largely uninhabited hills in the south (Bookcliffs). As of the 2010 census the population was 32,588. The county seat and largest city is Vernal.

\_\_ t \_\_\_\_\_ a \_\_\_\_\_ k \_\_\_\_\_  
 14 6



Uintah County has three *state parks*: Steinaker State Park, Red Fleet State Park, and the Utah Field House of Natural History State Park Museum. Red Fleet and Steinaker are located north of Vernal in a region filled with sagebrush flats, semi-desert shrublands, and juniper forests. Wildlife includes rabbits, deer, bobcats, coyotes, owls, eagles, and hawks. Both *state parks* feature a reservoir that provides drinking and irrigation water to Uintah County. The Natural History Museum is located in Vernal and is a great place to see fossils and life-size dinosaur replicas.

\_\_\_\_\_ t \_\_\_\_\_  
 1

Large sections of the Uintah and Ouray Indian *Reservation* are located in Uintah County. Tribal headquarters are located in Fort Duchesne. The *reservation* is homeland to the Northern Ute Tribe and is the second largest *reservation* in the United States. The Utes have a tribal membership of 2,970 and over half of its membership live on the *reservation*. They operate their own tribal government and the Utes also operate several businesses. Cattle raising and mining of oil and natural gas are critical sources of money for the tribe.

\_\_\_\_\_ n \_\_\_\_\_  
 5

*Vernal* is the county seat and largest city of Uintah County. It is located in northeastern Utah about 20 miles from the Colorado border. The city is situated in the lowlands of a high desert area named Ashley Valley at 5,328 ft above sea level. *Vernal* has a cold semi-arid climate. Average precipitation is 9.23 inches annually. The population of Vernal in 2014 was 10,844.

\_\_\_\_\_ M \_\_\_\_\_  
 4

The *Uinta Mountains* are part of the Rocky Mountains but are unique because they run east to west. The eastern slope of the *Uinta Mountains* is located in the northwestern part of Uintah County. The Uintas are an area with high mountains (above 12,000 ft), alpine lakes and forests. The *Uinta Mountains* affect our world by providing critical water sources. The Uintas are home to many plants and animals and ranchers rely on the mountain pastures for cattle grazing. The Uintas are also a valuable recreation area.



# GEOGRAPHY

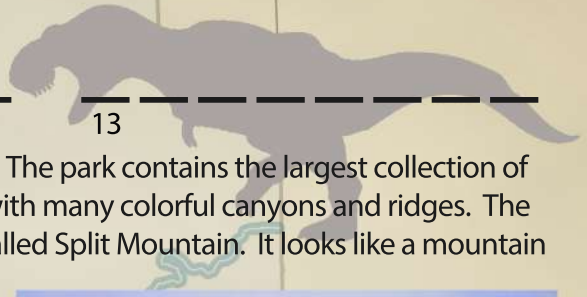
n

16

9

a

13



*Dinosaur National Monument* is located on the border of Colorado and Utah. The park contains the largest collection of fossilized dinosaur bones from the Jurassic Period. The backcountry is filled with many colorful canyons and ridges. The main geologic formation in the monument that can be seen from Vernal is called Split Mountain. It looks like a mountain that has been cut in half where the Green River exits the canyon.

r

7

There is some *agriculture* in Uintah County. When irrigated, the valleys provide fertile farmland to raise cattle and grow alfalfa and corn. The growing season in Vernal lasts about 4 months.



o

f

15

The *Book Cliffs* are a series of desert mountains and cliffs in southern Uintah County. They are so named because the cliffs appear similar to a shelf of books. Sage brush, greasewoods and junipers are found at lower elevations of 5,500 ft. while gamble oaks, mountain mahoganies, aspens and douglas firs are at the highest elevations around 8,200 feet. The area is remote with mining remains, several old ranch sites, and lots of wildlife. Visitors may see deer, elk, black bear, blue and sage grouses, numerous hawks, antelope, mountain lions, small mammals, birds, reptiles, and also amphibians.



&

n

8

3

On the desert plateaus of Uintah County there are layers of sand and shale deep in the earth which hold *oil and natural gas*. Utah's first oil well was located about 10 miles southeast of Vernal in 1948 and Uintah County has continued to develop production of *oil and natural gas*.

G

11

2

r

The *Green River* is a large and powerful river that flows through the middle of Uintah County. It is a chief tributary of the Colorado River and provides water to large sections of the western United States. The Green provides habitat to many plants and animals and is a world-renowned fishery. The Green is also a popular choice for river rafting.

7

2

9

3

4

10

12

8

7

9

3

17

2

6

4

16

2

1

5

11

6

5

4

9

16

2

13

14

8

11

3

4

9

3

14

4

11

3

8

15

7

3

4

10



By the 1500s the **UTE** Indians had spread throughout the area now known as Uintah County. They traveled through large areas in small groups hunting, fishing and gathering plants. They wore clothes made from animal hides or dried bark and lived in tipis or brush shelters. Utah was named for the Ute Indians. Ute means "Land of the Sun". Uintah County was named after the Uintah Utes Tribe.



In the 1820s and 30s American and French trappers found many beaver and other wildlife in the Basin. A small trading post was built near present-day Whiterocks. Here, trappers could trade their beaver pelts in exchange for supplies. Conflicts with the Utes forced the trappers to abandon the post in 1844.

When the Mormon Pioneers arrived in Utah in 1847 they began to settle everywhere except in the Uintah Basin. Brigham Young sent men to the Uintah Basin. They reported that the area was a wasteland and Young chose not to send settlers. In 1861 Abraham Lincoln created the Uintah Indian **RESERVATION**. In the 1880s, the Uncompahgre Reservation was created in the south part of Uintah County. Utes from Utah and Colorado were forced to move to the reservations but as settlers realized the value of the land, the federal government decreased the size of the reservation.

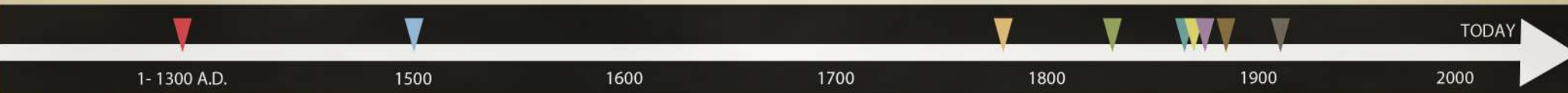
The **FREMONT** People were some of the first inhabitants of Uintah County. They were hunters and gatherers that also grew corn. It is estimated that they lived here 2,000 to 700 years ago. Evidence of their communities has been discovered in Uintah County and many Fremont Artifacts can be seen in the local museums in Vernal. There are also several locations where visitors can enjoy the spectacular rock art left behind by the Fremont People.



Early explorers, Dominguez and **ESCALANTE**, passed through Uintah County in 1776 looking for a route to Monterey, California. In his diary, Escalante called the Basin "... a fine plain abounding in pasturage and fertile, arable land, provided it were irrigated...."



A rock inscription in Uintah County made by French **TRAPPER**, Antoine Robidoux.



John Wesley **POWELL**, a one-armed Civil War Veteran, floated down the Green River in 1869 and again in 1871. He was able to map the area and take pictures on the second expedition. The knowledge that he gained on these explorations was used to help settle the dry western regions of the U.S.



Ranchers and farmers had begun to settle in the Ashley Valley (**VERNAL** City today). In 1880, the territorial legislature created Uintah County.



In 1889 mines were opened to extract the mineral Gilsonite. This mineral resembles shiny black obsidian and was used in many products. **GILSONITE** mining became the first large commercial enterprise in the Uintah Basin, causing most of its early population growth. The Uintah Railroad was built to transport loads of this rare mineral.



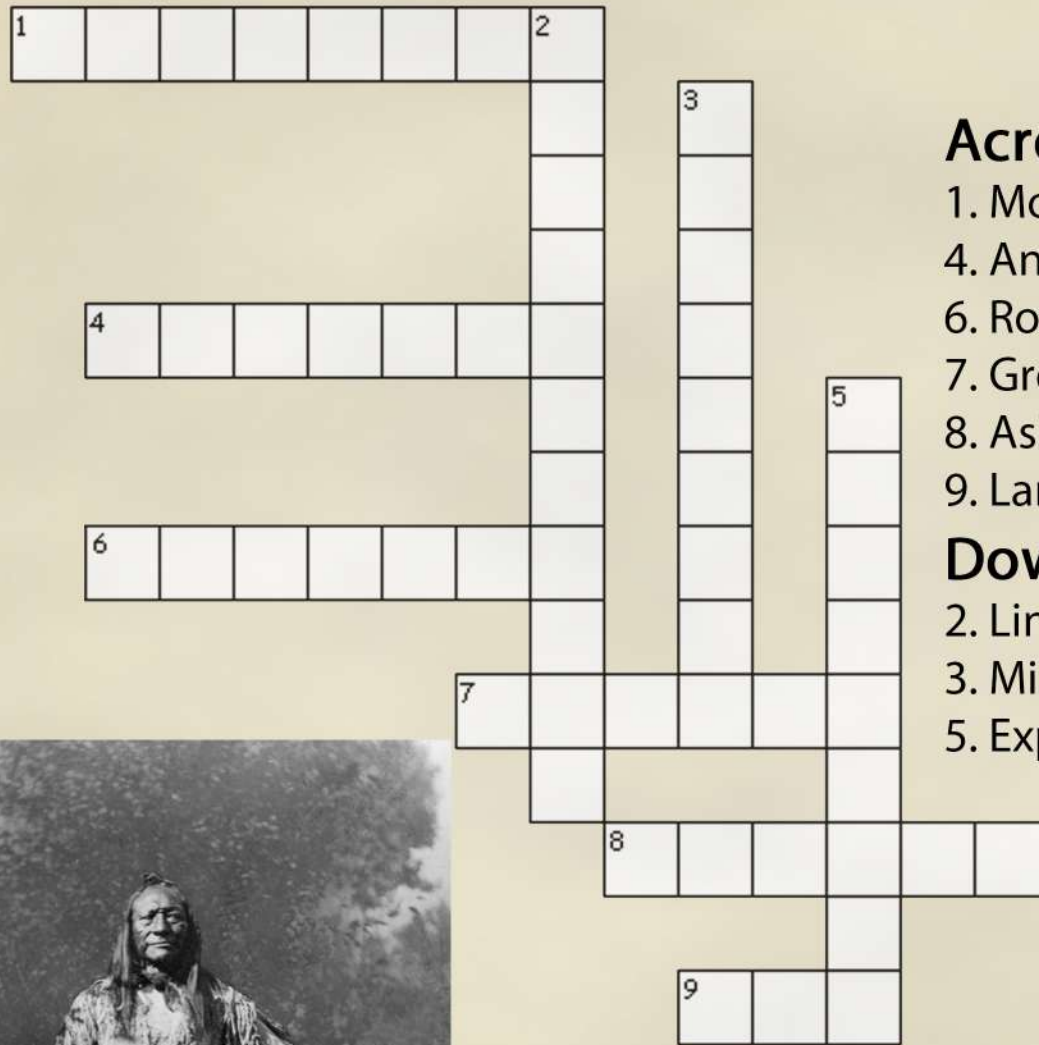
In 1909 archaeologists discovered an amazing quarry of dinosaur bones—150 million years old. The quarry of dinosaur bones is now protected in **DINOSAUR** National Monument



# Uintah County HISTORY

# Uintah County History

Use the highlighted words on the previous page as clues to find the answers to this crossword puzzle.



## Across

- 1. Monument
- 4. Antoine
- 6. Rock Art
- 7. Green River
- 8. Ashley Valley
- 9. Land of the Sun

## Down

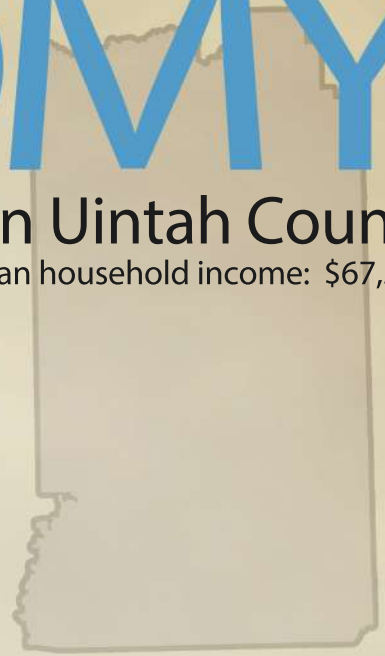
- 2. Lincoln
- 3. Mining
- 5. Explorer



# Uintah County ECONOMY

## The Most Common Industries In Uintah County

Median household income: \$67,561



### Retail Trade

Vernal has many locally owned shops located on Main Street and several large shopping centers

13.9%

### Gas, Oil Extraction, and Mining

Oil and gas have been produced in Uintah County since the mid 1900s and the county continues to be a major producer of energy resources.

13%

### Government

There are multiple federal and state agencies, county government and city governments that employ almost 1,600 people.

12.9%

### Education

Uintah County has 7 elementary schools, 2 middle schools, 3 high schools, 1 charter school and 2 private schools.

9.6%

### Hotel & Food Services

Uintah County has a variety of dining options and hotels.

9.4%

### Healthcare

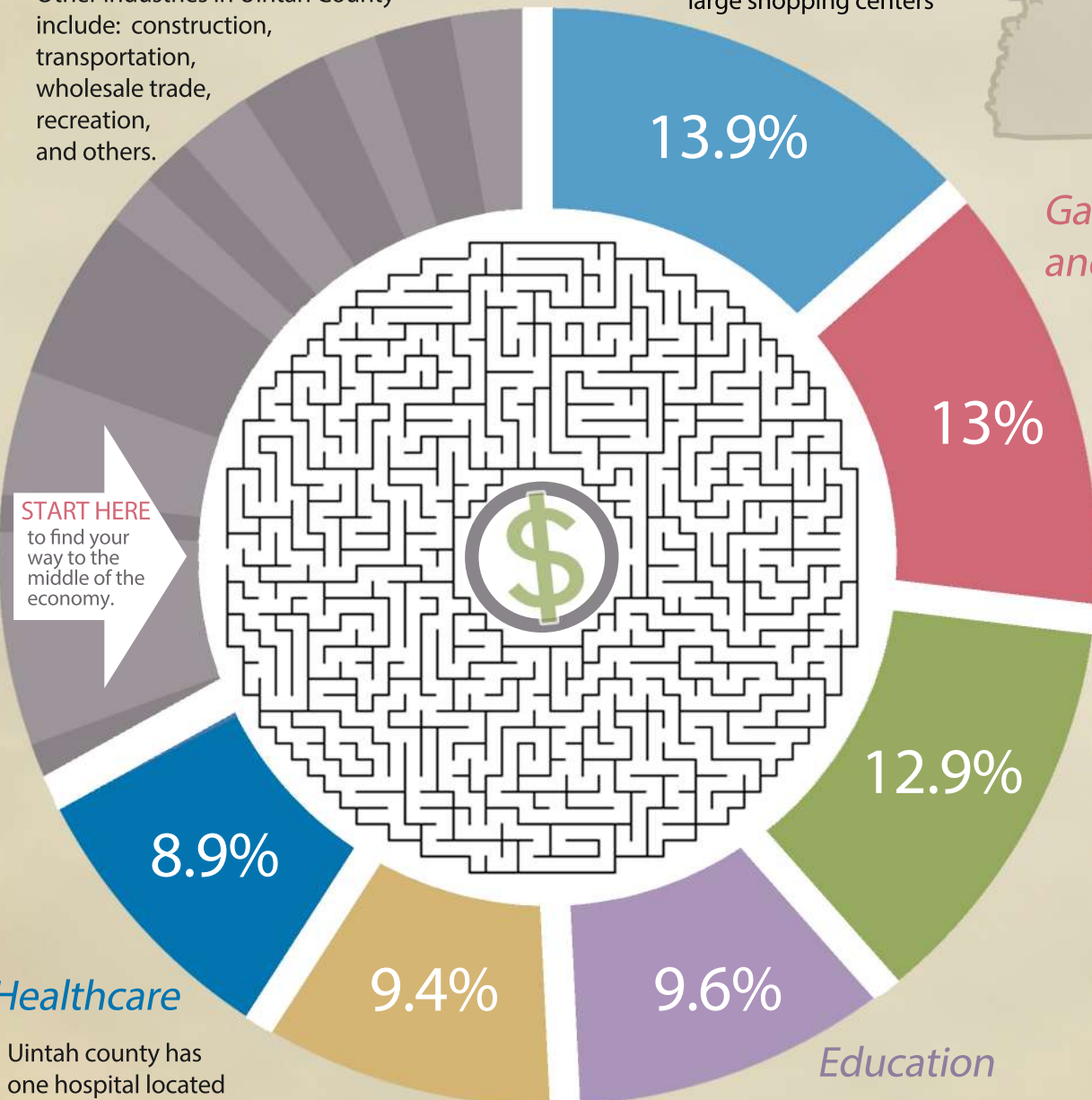
Uintah county has one hospital located in Vernal and multiple urgent care and doctor's offices.

8.9%

### Other Industry

Other industries in Uintah County include: construction, transportation, wholesale trade, recreation, and others.

START HERE  
to find your way to the middle of the economy.







Discover beautiful  
EXPLORE  
DIVERSE breathtaking  
adventure

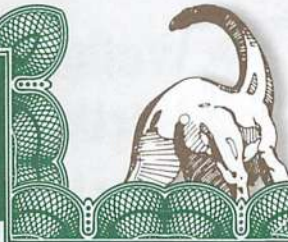


cut here

# DINOSAUR HUNTING LICENSE

## SPECIAL PERMIT

\*No. 181 - UO22



### ISSUED TO:

NAME \_\_\_\_\_  
ADDRESS \_\_\_\_\_  
CITY \_\_\_\_\_ STATE \_\_\_\_\_ ZIP \_\_\_\_\_

**ISSUED BY AUTHORITY**  
**U.S. REPTILE CONTROL COMMISSION**  
*Restricted to Northeastern Utah Only*

This license entitles holder to hunt for, pursue, and remove from that area known as Dinosaur Control Area of Northeastern Utah the following types of reptilian wild game:

- A. TYRANNOSAURUS REX - 1 Only (adult male)
- B. DIPLODOCUS GIGANTICUS -1 Only (either sex) and not less than 5000 lbs. live weight
- C. STEGOSAURUS - 2 Only (males) any size
- D. PTERODACTYL - 4 Only (without young)

The holder of this license agrees to remove all such game, legally bagged by him under the proper restriction, properly preserved and in sanitary condition within 5 days of time of reptile's death, and further agrees to have said game inspected by the Utah Game Warden before removal.



Signed \_\_\_\_\_

*Al O'Saurus*

ISSUED BY AL O'SAURUS  
Deputy Lizard Warden, Vernal, Utah

**ALTERATIONS ERASURES OR OBLITERATIONS VOID THIS CERTIFICATE**

\*SPEAK the number: "I eight one, you ought to, too."

Dinosaur Hunting License copyright 1963  
Dinosaurland Travel Board, Inc.

Congratulations! You are now an expert on *uintah county*. You have earned the privilege to become an official **DINOSAUR HUNTER!**

Cut out the certificate, Fill in YOUR information, and remember to carry this with you on your **NEXT VISIT** to *uintah county!*